

## IP67 Safe area aluminium limit switchbox with high visibility dome indicator

The YT-850 is an IP67 weatherproof limit switchbox that provides remote end of travel confirmation by means of internal cams or targets striking switches. The quick and easy to adjust cams are fitted to the switchbox drive shaft which in turn is connected to the actuator pinion using the Namur interface.

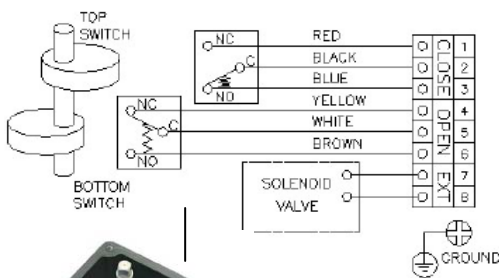
The YT-850 has an aluminium housing with a high visibility visual position indicator, a stainless steel drive shaft and is supplied complete with a mounting bracket conforming to VDI/VDE 3845 and Namur.



### Codes and switch options :

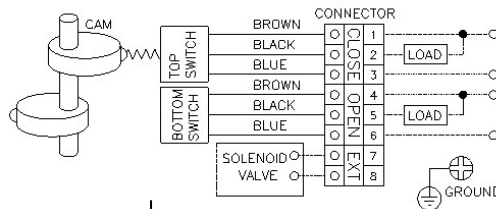
YT-850M	2 x V3 mechanical SPDT micro switches
YT-850P	2 x 3 wire Autonics PS17-5DNU proximity sensors NPN
YT-850D	2 x V3 pneumatic DPDT switches

### Mechanical:



**Standard switch:**  
2 x Omron SPDT SS5GL  
AC: 250V 3A, 125V 5A  
DC: 30V 4A

### Inductive proximity:



**Standard sensor:**  
2 x Autonics PS17-5DNU  
Operating voltage: 12-24VDC  
Allowable voltage: 12-30VDC  
Operating distance: 5mm

### Materials:

Body	Die-cast aluminium
Cover	ABS/ Polycarbonate
Shaft	Stainless steel
Bracket	Stainless steel
Temp range	-20 to +80°C
Connection	2 x M20
Weight	0.88 kgs

### Mounting bracket codes:

Actuator mounting	Pinion height	Code
80 x 30	20	80-20
80 x 30	30	80-30
130 x 30	30	130-30
130 x 30	50	130-50

Fits the **CH-air A Type** Pneumatic actuator ~  
**Actuator features :**

*Robust rack and pinion construction*

*High accuracy machining of components*

*ATEX Ex II 2 GD approved for use in hazardous areas*

*CE Approved*

*Guaranteed for 1,000,000 cycles*

*Balanced air & spring strokes in spring return version*

*Safe to dismantle for routine maintenance*

*Compliant with all actuator standards*

*Accessories are easy to mount*

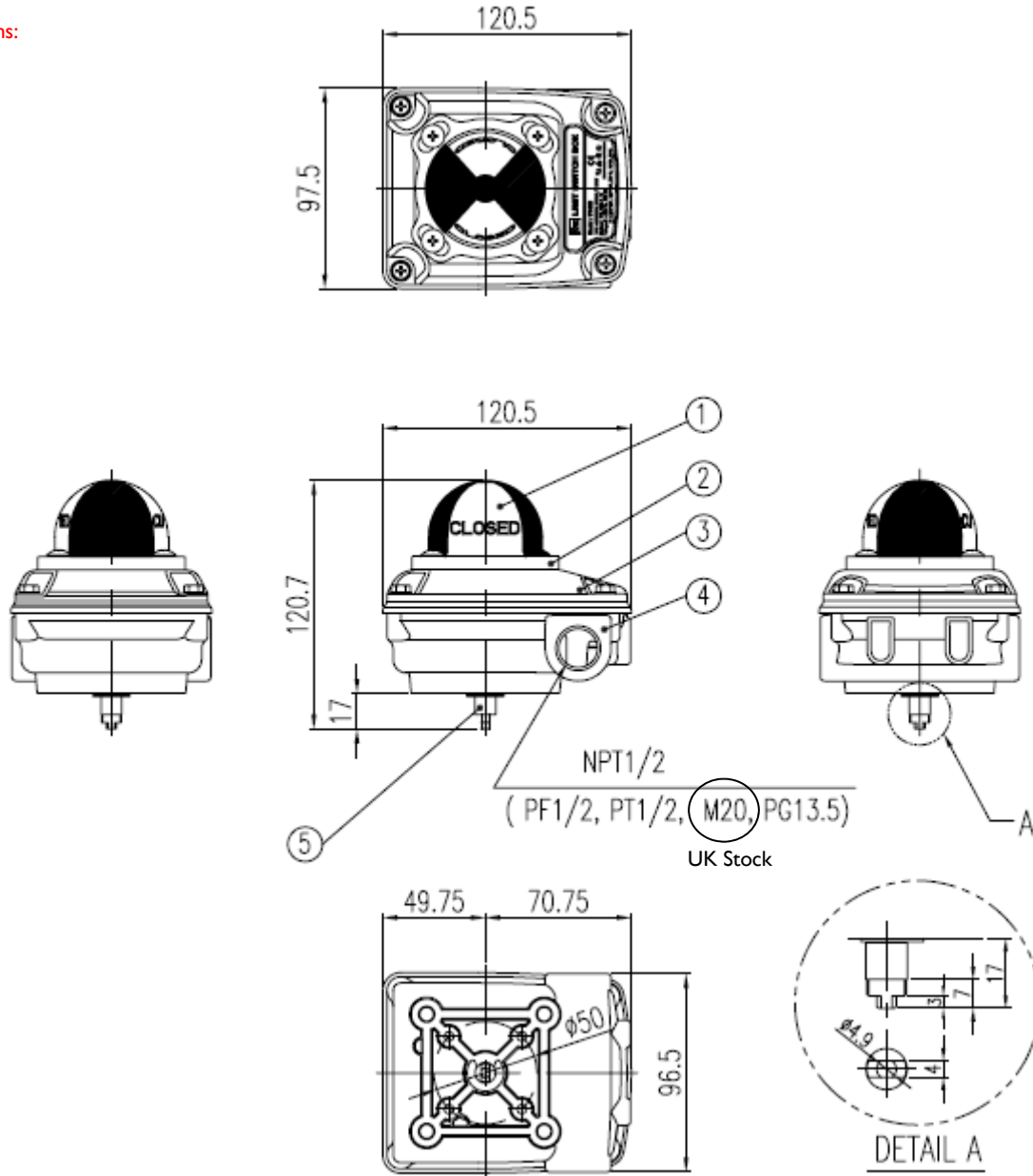
*Hard anodised aluminium body*

*ENP coated option (Extra cost)*

*Teflon® coated option (Extra cost)*

*Stainless steel version (Extra cost)*

Dimensions:



No	Item	Material	Qty
1	Indicator	ABS	1
2	Indicator cover	PCV (Polycarbonate)	1
3	Base top	Die-cast aluminium	1
4	Base body	Die-cast aluminium	1
5	Shaft	303 Stainless steel	1

Colour options (minimum quantities apply):



NB: UK standard stock is black