



Model 1101E/1102E



Doc: CH-1101E/01

Nov 2006

Air operated 2 way economy brass ball valve

Full bore 2 way nickel plated brass economy ball valve, designed for automation with integrally cast ISO5211 actuator mounting platform allowing direct mounting of actuators, fitted with CH-air 'A' type pneumatic actuator. Supplied assembled and dry bench function tested. Minimum of 80 psi (5.5 bar) air supply pressure to the actuator is required.

1101E With double acting actuator

1102E With spring return actuator

Full size range from 1/4" to 3".

Applications:

Water, oil and most non-corrosive media, subject to compatibility with wetted parts in contact with media. Actuators sized on a maximum differential pressure of 10 bar wet service, if the intended duty is above this differential, or dry (air or gas) call to check actuator sizing as a larger output actuator may be required.

Maximum working temperature of assembly is +80C. If the intended duty is at a higher temperature than this, select model 1111E/1112E which has a mounting kit between the valve and actuator which uses air cooling to dissipate heat away from the actuator (maximum +120C).

Valve Specifications:

Body	Nickel plated brass
Ball	Nickel plated brass
Seats	PTFE
Pressure rating	UTI 1" 40 bar, rest 25 bar
Valve temp limits	-20 to +150°C
Actuator temp limits	-20 to + 70°C

Accessories:

Solenoid control:

This provides electrical control of the valve. The air is constantly supplied to the solenoid which in turn controls the air to and from the actuator. The solenoid direct mounts to the actuator using the actuator's Namur connection.

Position Confirmation:

Remote end of travel confirmation can be provided by adding a top mounted limit switch box. A variety of switch options and housings are available. See our LSB range for details.

Position control:

The standard on/ off function can be converted to modulating function, using either a 3-15psi or 4-20mA control signal, by adding a pneumatic or electro-pneumatic positioner. See our YT range for details.



Quick guide to the CH-air A Type actuator standard features :

Robust rack and pinion construction

High accuracy machining of components

ATEX Ex II 2 GD approved for use in hazardous areas

CE Approved

Guaranteed for 1,000,000 cycles

Balanced air & spring strokes in spring return version

Safe to dismantle for routine maintenance

Compliant with all actuator standards

Accessories are easy to mount

Hard anodised aluminium body

ENP coated option (Extra cost)

Teflon® coated option (Extra cost)

Stainless steel version (Extra cost)



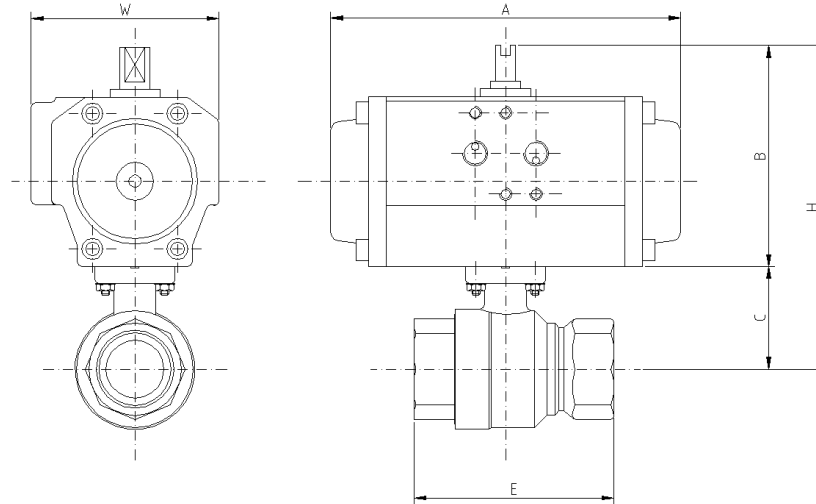
Model 1101E/1102E



Doc: CH-1101E/01

Nov 2006

Air operated economy 2 way brass ball valve - Dimensions (to nearest mm)



Double Acting									
	Model	A	B	C	E	H	W	Kilos	Kv
1/4"	CH032	117	65	29	65	94	48	0.8	16.3
3/8"	CH032	117	65	29	65	94	48	0.8	16.3
1/2"	CH032	117	65	29	65	94	48	0.8	16.3
3/4"	CH032	117	65	32	75	97	48	0.8	29.5
1"	CH042	160	77	36	86	113	61	1.6	43.0
1 1/4"	CH050	138	87	41	95	128	75	2.0	89.0
1 1/2"	CH063	156	103	57	101	160	86	2.8	230.0
2"	CH063	156	103	64	121	167	86	3.9	265.0
2 1/2"	CH075	210	120	90	165	210	94	7.0	540.0
3"	CH075	210	120	100	188	220	94	9.1	873.0
Spring Return									
1/4"	CH042SR	160	77	29	65	106	61	1.3	16.3
3/8"	CH042SR	160	77	29	65	106	61	1.3	16.3
1/2"	CH042SR	160	77	29	65	106	61	1.3	16.3
3/4"	CH050SR	138	87	32	75	119	75	1.6	29.5
1"	CH050SR	138	87	36	86	123	75	1.9	43.0
1 1/4"	CH063SR	156	103	41	95	144	86	2.9	89.0
1 1/2"	CH075SR	210	120	57	101	177	94	4.0	230.0
2"	CH075SR	210	120	64	121	184	94	4.9	265.0
2 1/2"	CH085SR	228	130	90	165	220	104	8.8	540.0
3"	CH085SR	228	130	100	188	230	104	10.9	873.0

Kv is in m³/hr, based on water at ambient temperature with a 1 bar pressure drop across the valve

Subject to alteration without notice. Uncontrolled copy, not subject to automatic updates