



Model **J3**-2200



Doc: J3/2200/02

Feb 2010

Electrically operated 2 way 316SS ball valve

Full bore 2 way 2 piece 316 stainless steel ball valve, designed for automation with integrally cast ISO5211 actuator mounting platform fitted with direct mounted **J3** electric actuator. Supplied assembled and dry bench function tested. Full size range from 1/4" to 4".



Type	Function
J3-2203	Standard power to open - power to close - Stays put on mains failure
J3-2204	Failsafe BSR - Battery Spring Return - Fails to safe position using an internal battery
J3-2205	Modulating DPS - Digital Positioning System

Applications:

Water, oil and many corrosive medias, subject to compatibility with wetted parts in contact with media. Actuators sized on a maximum differential pressure of 10 bar wet service, if the intended duty is above this differential, or dry (air or gas) call to check actuator sizing as a larger output actuator may be required.

Maximum working temperature of assembly is +70C. If the intended duty is a higher temperature than this, select model **J3-2210** which has a mounting kit between the valve and actuator which uses air cooling to dissipate the heat away from the actuator (maximum +130C).

Valve Specifications:

Body	CF8M Cast 316SS
Ball	CF8M Cast 316SS
Seats	RTFE
Pressure rating	UTI 2" 1000psi CWP
Valve temp limits	-20 to +200°C
Actuator temp limits	-20 to + 70°C



Status light basic functions:

Constantly lit LED The LED flashes with 2 blinks

If the actuator is operating correctly with no faults, the LED shows a constantly lit light.

If the actuator has been left in 'manual' mode, the actuator's motor runs but doesn't drive the output shaft. After a pre-set time, the actuator knows that as the torque limiter has not activated and that the motor is running, it must be in manual.

The LED flashes on/ off

When the actuator senses an impending valve jam, the electronic torque limiter is activated and on activation, repeatedly flashes the LED on and off.



Quick guide to the **J3** electric actuator standard features :

Highly visible LED light gives continuous actuator status indication.

J3 L - 12-24V AC/DC

J3 H - 80-240V AC/DC

Multi-voltage capable with auto-voltage sensing:

Torque output: range:
25~95Nm Break
20~80Nm Reset

Electronic torque limiter
Protects against valve jams

Anti-condensation heater

Manual override

All connections via external DIN plugs ~ no need to remove cover to connect

Volt free end of travel confirmation switches

IP65 weatherproof housing

CE marked

Traceable sequential serial numbering system

Optional failsafe kit (Battery Back-up) - actuator fails to safe position on power failure

Optional modulating kit with digital positioning system, either 0-10V or 4-20mA



Model **J3-2200**

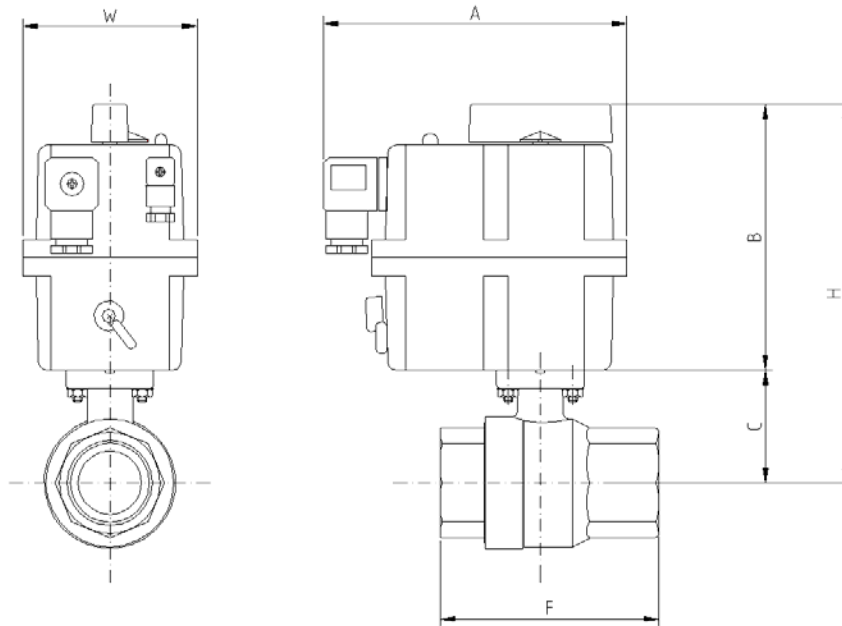
DIMENSIONS



Doc: J3/2200/02

Feb 2010

Electrically operated 2 pce stainless steel ball valve - Dimensions (to nearest mm)



Dimensions remain unchanged for all versions (on-off, failsafe & modulating)

	Model	A	B	C	F	H	W	Kilos	Kv
1/4"	20	177	149	39	65	188	110	2.1	6.8
3/8"	20	177	149	39	65	188	110	2.1	6.8
1/2"	20	177	149	39	65	188	110	2.1	12.8
3/4"	20	177	149	47	75	196	110	2.1	29.1
1"	20	177	149	57	88	206	110	2.6	47.8
1 1/4"	20	177	149	61	102	210	110	3.0	72.6
1 1/2"	35	177	171	78	110	249	110	4.4	106.8
2"	35	177	171	86	125	257	110	5.4	213.7
2 1/2"	55	177	196	109	161	305	110	9.4	273.3
3"	85	177	196	118	178	314	110	12.4	495.3

Kv is in m³/hr, based on water at ambient temperature with a 1 bar pressure drop across the valve

Subject to alteration without notice. Uncontrolled copy, not subject to automatic updates