



Model **J3-2410**



Doc: J3/2410/01

Nov 2007

Electrically operated heavy duty 316SS ball valve with kit

Reduced bore 3 piece heavy duty 316 stainless steel ball valve, designed for automation with integrally cast ISO5211 actuator mounting platform fitted via stainless steel mounting kit with **J3** electric actuator. Encapsulated bolt design UTI 2". Supplied assembled and dry bench function tested. Full size range from 1/2" to 2".

Type	Function
J3-2413	Standard power to open - power to close - Stays put on mains failure
J3-2414	Failsafe BSR - Battery Spring Return - Fails to safe position using an internal battery
J3-2415	Modulating DPS - Digital Positioning System

Applications:

Water, oil and many corrosive medias, subject to compatibility with wetted parts in contact with media. Actuators sized on a maximum differential pressure of 10 bar wet service, if the intended duty is above this differential, or dry (air or gas) call to check actuator sizing as a larger output actuator may be required.

Maximum working temperature of assembly is +130C. If the intended duty is a higher temperature than this, contact us to discuss an extended mounting kit between the valve and actuator (maximum +200C).

Valve Specifications:

Body	CF8M Cast 316SS
Ball	CF8M Cast 316SS
Seats	Carbon filled PTFE
Pressure rating	UTI 2" 133 bar, rest 64 bar
Valve temp limits	-20 to +210°C
Actuator temp limits	-20 to + 70°C

Status light basic functions:

Constantly lit LED	The LED flashes with 2 blinks	The LED flashes on/ off
If the actuator is operating correctly with no faults, the LED shows a constantly lit light.	If the actuator has been left in 'manual' mode, the actuator's motor runs but doesn't drive the output shaft. After a pre-set time, the actuator knows that as the torque limiter has not activated and that the motor is running, it must be in manual.	When the actuator senses an impending valve jam, the electronic torque limiter is activated and on activation, repeatedly flashes the LED on and off.



Quick guide to the **J3** electric actuator standard features :

Highly visible LED light gives continuous actuator status indication.

J3 L - 12-24V AC/DC

J3 H - 80-240V AC/DC

Multi-voltage capable with auto-voltage sensing:

Torque output: range:
25~95Nm Break
20~80Nm Reseat

Electronic torque limiter
Protects against valve jams

Anti-condensation heater

Manual override

All connections via external DIN plugs ~ no need to remove cover to connect

Volt free end of travel confirmation switches

IP65 weatherproof housing

CE marked

Traceable sequential serial numbering system

Optional failsafe kit (Battery Back-up) - actuator fails to safe position on power failure

Optional modulating kit with digital positioning system, either 0-10V or 4-20mA



Model J3

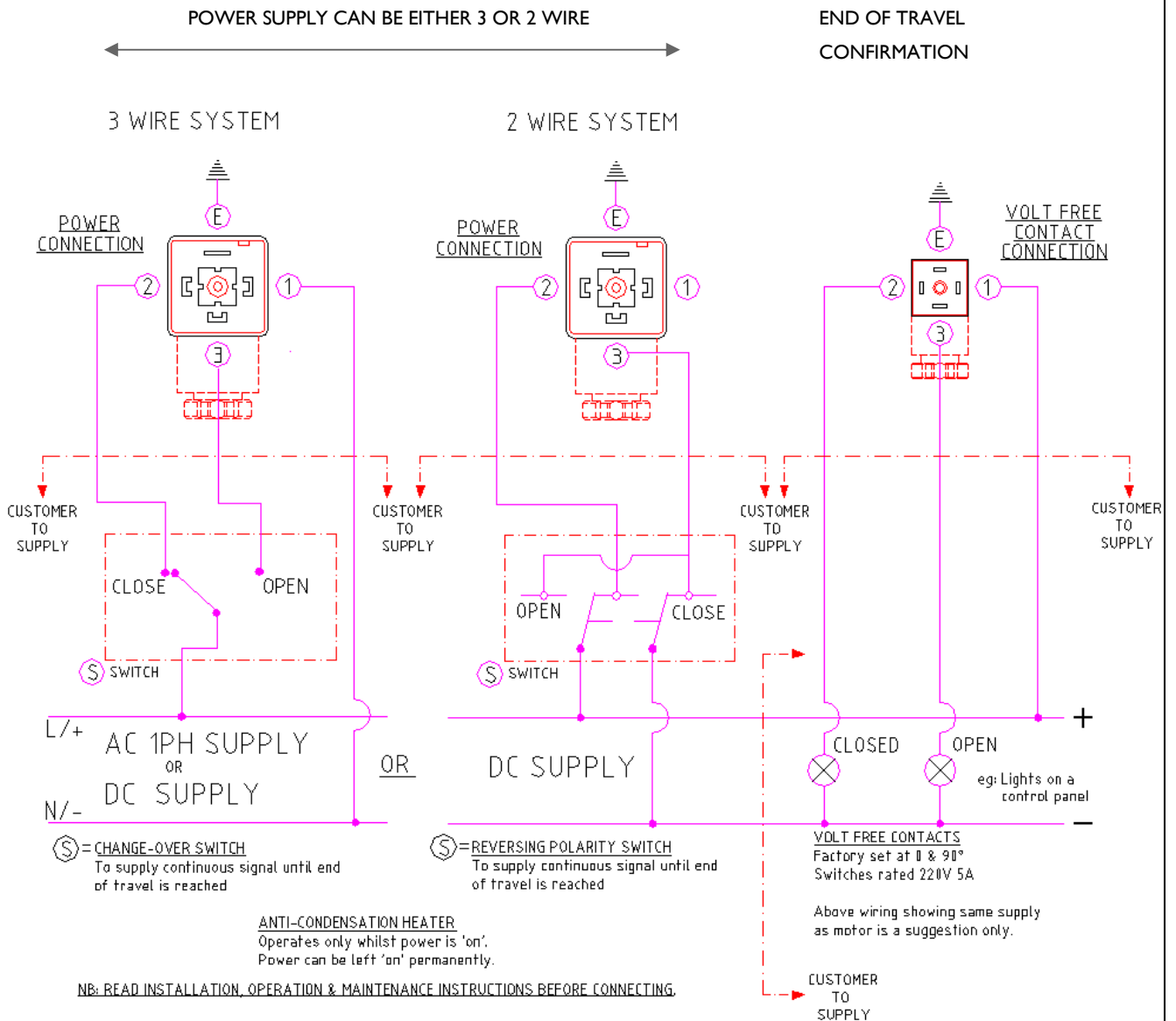
Wiring Diagram - AC or DC



Doc: J3/STD.WD/01

Jan 2008

AC (1ph) OR DC SUPPLY - WIRING FOR ON-OFF OR FAILSAFE ACTUATORS



FUNCTION: ON-OFF VERSION

Power open, power close
Stays put on mains power failure

FUNCTION: FAILSAFE VERSION

Power open, power close - trickle charges battery system in either open or closed position
Actuator sent by battery power to pre-set failsafe position on power failure
Actuator returns to pre-failure position on power resumption.
Failsafe can be either NC (normally closed) or NO (normally open)



Model **J3-2410**

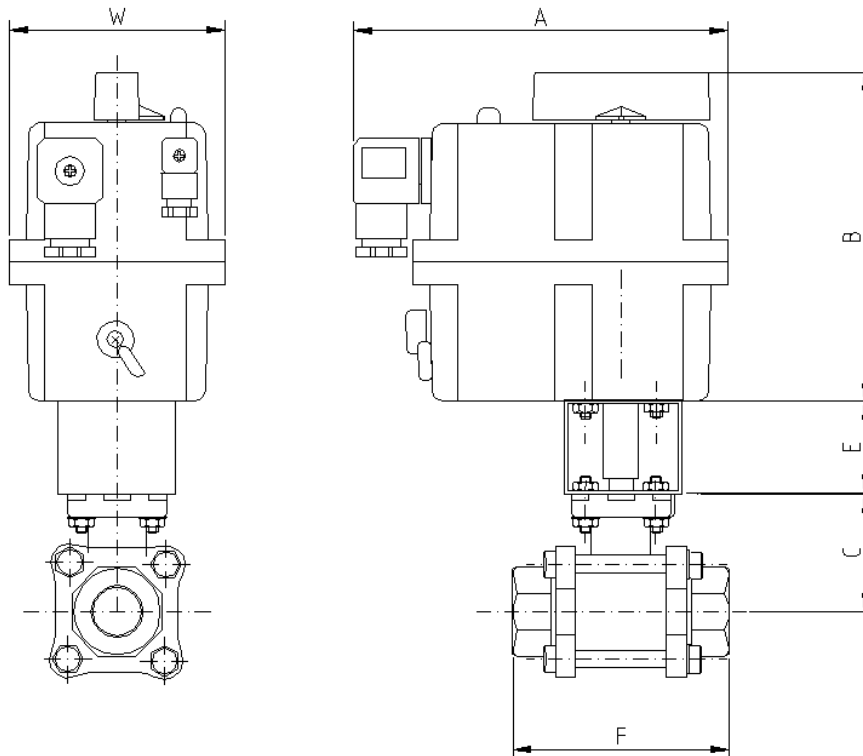
DIMENSIONS



Doc: J3/2410/01

Nov 2007

Electrically operated heavy duty stainless ball valve with kit - Dimensions (to nearest mm)



Dimensions remain unchanged for all versions (on-off, failsafe & modulating)

	Model	A	B	C	E	F	H	W	Kilos	Bore
1/2"	20	177	149	43	50	75	242	110	2.2	12.6
3/4"	20	177	149	43	50	73	242	110	3.0	15.0
1"	20	177	149	47	50	85	246	110	3.7	20.0
1 1/4"	20	177	149	59	50	105	258	110	4.5	25.0
1 1/2"	35	177	171	63	50	111	262	110	6.3	32.0
2"	35	177	171	79	50	127	278	110	7.3	38.0



Valve Data Sheet



Doc SBV-M88/03

Nov 2007

Direct mount 3 pce heavy duty stainless steel ball valve



Specifications:

Construction	3 Pce Reduced bore direct mount ball valve
Size Range (Full)	1/4" to 2" BSP
Pressure Rating	3000 psi max
Valve Body Material	ASTM A351CF8M
Trim Material	ASTM A351CF8M
Seat Material	Carbon filled PTFE
Seal Material (Options)	PTFE
Inspection & Test	API 598 BS6755 Pt I
Standards	ANSI B16.34, ANSI I6.25, ANSI B1.20, API 6D ISO5211 DIN 259, DIN 2999, DIN3337. MSS SP25
Certification	EN 10204 3.1b on request
Temperature Range	-20 to +200C

Approvals:

Approved ?



PED/97/23/EC



ATEX 94/9/EC
II 2 GD



API 607 4th Ed'n /
BS6755 Pt 2



TA-Luft



DIMENSIONS (mm)

H, B1 DIMENSIONS ± mm

SIZE	øA		B1		B2		øC		øD		ød1		ød2		E		F		øG		H		J		L		L1		L2		øM1		øM2		øX1		øX2		P		ISO5211		Wt(Kg)																										
	F	R	F	R	F	R	F	R	F	R	F	R	F	R	F	R	F	R	F	R	F	R	F	R	F	R	F	R	F	R	F	R	F	R	F	R	F	R	F	R	F	R																											
1/4"	14.0		8.1		42.6		11.5		14.0		9.24		11.8		139		9.0		14.0		78.3		1.75		72.5						10		36		42		6		6		3		F03 & F04		0.88																								
3/8"	17.6		8.1		42.6		12.6		17.5		12.53		13.6		139		9.0		17.5		78.3		1.75		72.5						10		36		42		6		6		3		F03 & F04		0.88																								
1/2"	21.7		8.1		42.6		15.0		21.6		15.76		18.0		139		9.0		21.7		78.3		1.6		72.5		72.5				10		36		42		6		6		3		F03 & F04	F03 & F04	0.82 0.88																								
3/4"	27.3		9.6		46.9		20.0		27.2		20.96		24.0		139		9.0		27.2		82.6		1.6		85.4		72.5		75		13		36		42		6		6		3		F03 & F04	F03 & F04	1.28 0.82																								
1"	34.1		11.4		59.3		25.0		34		26.64		30.5		165		11.0		34.0		98.5		1.6		105.3		85.4		89.8		13		42		50		42		6		7		6		5		F04 & F05	F03 & F04	2.01 1.28																				
1 1/4"	42.8		11.4		62.6		32.0		42.8		35.08		39.0		165		16.5		11.0		110.0		42.7		101.8		98.5		1.6		1.6		111		105.3		109.4		13		42		42		50		6		7		5		F04 & F05	F04 & F05	2.76 2.01														
1 1/2"	48.7		11.4		79.0		38.0		48.6		40.49		45.0		215		16.5		14.0		110.0		48.6		127		101.8		1.6		1.6		127.3		111		114.4		13		50		42		70		7.5		9		7		10		F05 & F07	F04 & F05	4.21 2.76												
2"	61.0		14.1		87.7		50.0		60.5		52.51		56.5		215		21.5		14.0		140.0		60.5		135.6		127		1.6		1.6		145		145		130		16		50		50		70		7.5		7.5		9		9		10		F05 & F07	F05 & F07	5.93 4.21										
2 1/2"	77		16.8		108.7		65.0		76.3		76.1		65.7		262		21.5		17		19		14.0		76.3		167.7		135.6		1.6		1.6		185		145		145		16		16		70		102		102		10		10		12		12		16		16		F07 & F10	F05 & F07	12 6.88				
3"	90		17.8		117.7		80.0		90		90				262		262		17		19		19		90.0		176.7		167.7		205		185		185		16		16		70		102		102		10		10		12		12		16		16		F07 & F10	F07 & F10	16.2 12								
4"	115.2		115.2		16.8		17.8		133.7		117.7		100.0		80.0		116		116						312		262		17		19		116.0		116.0		192.7		176.7		240		205		20		20		70		102		102		10		10		12		12		16		16		F07 & F10	F07 & F10	25.8 16.2

