



Model 4111A/4112A



Doc: CH-4111/02

Nov 2007

Air operated 2 way PN16 stainless steel ball valve with kit

Full bore 2 way 2 piece stainless steel ball valve, ends flanged PN16, designed for automation with integrally cast ISO5211 actuator mounting platform, fitted via a stainless steel mounting kit with CH-air 'A' type pneumatic actuator. Supplied assembled and dry bench function tested. Minimum of 80 psi (5.5 bar) air supply pressure to the actuator is required.

4111 With double acting actuator

4112 With spring return actuator

Size range 1/2" to 6" (For ASA150 flanged option, see 4411/2)

Applications:

Water, low pressure steam, oil, air and most solvents and alkalis, subject to compatibility with wetted parts in contact with media. Actuators sized on a maximum differential pressure of 10 bar wet service, if the intended duty is above this differential, or dry (air or gas) call to check actuator sizing as a larger output actuator may be required.

Maximum working temperature of valve & actuator assembly is +130C. If the intended duty is at a higher temperature than this, contact us as for options.

Valve Specifications:

Body	CF8M Cast 316SS
Ball	CF8M Cast 316SS
Seats	PTFE
Pressure rating	16 bar
Valve temp limits	-20 to +200°C
Actuator temp limits	-20 to + 80°C

Accessories:

Solenoid control:

This provides electrical control of the valve. The air is constantly supplied to the solenoid which in turn controls the air to and from the actuator. The solenoid direct mounts to the actuator using the actuator's Namur connection.

Position Confirmation:

Remote end of travel confirmation can be provided by adding a top mounted limit switch box. A variety of switch options and housings are available
See our LSB range for details.

Position control:

The standard on/ off function can be converted to modulating function, using either a 3-15psi or 4-20mA control signal, by adding a pneumatic or electro-pneumatic positioner.
See our YT range for details.



Quick guide to the CH-air A Type actuator standard features :

Robust rack and pinion construction

High accuracy machining of components

ATEX Ex II 2 GD approved for use in hazardous areas

CE Approved

Guaranteed for 1,000,000 cycles

Balanced air & spring strokes in spring return version

Safe to dismantle for routine maintenance

Compliant with all actuator standards

Accessories are easy to mount

Hard anodised aluminium body

*ENP coated option
(Extra cost)*

*Teflon® coated option
(Extra cost)*

*Stainless steel version
(Extra cost)*



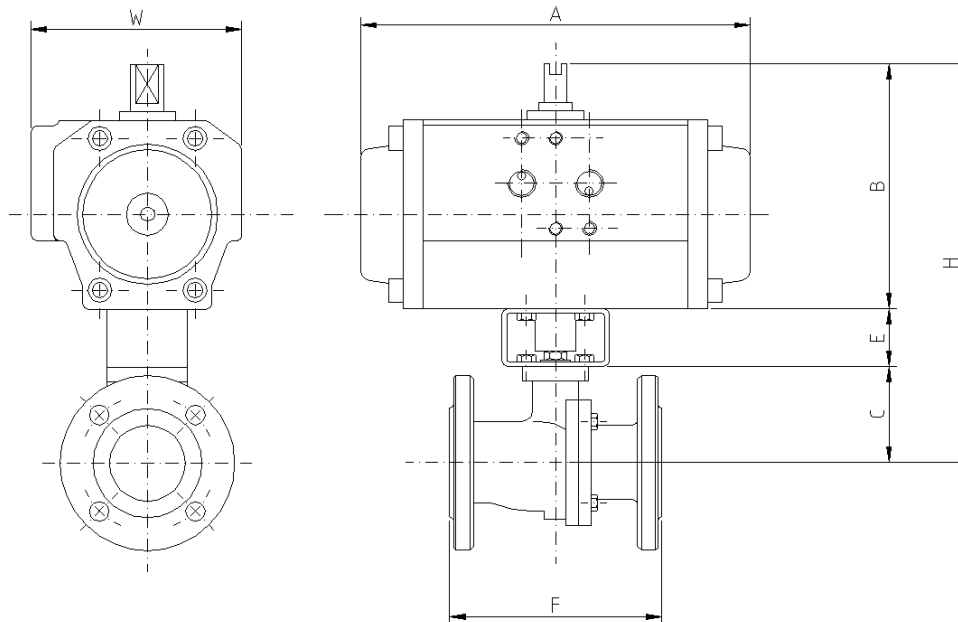
Model 4111/4112



Doc: CH-4111/02

Nov 2007

Air operated 2 way PN16 stainless steel ball valve with kit - Dimensions (to nearest mm)



Double Acting									
	Model	A	B	C	E	F	H	W	Kilos
1/2"	CH042	160	77	48	50	115	175	61	3.2
3/4"	CH042	160	77	53	50	120	180	61	4.0
1"	CH042	160	77	59	50	125	186	61	4.8
1 1/4"	CH050	138	87	71	50	130	208	75	6.6
1 1/2"	CH063	156	103	76	50	140	229	86	8.8
2"	CH063	156	103	85	50	150	238	86	11.5
2 1/2"	CH085	228	130	94	70	170	294	104	18.7
3"	CH085	228	130	103	70	180	303	104	22.7
4"	CH115	310	172	132	70	190	374	134	35.8
Spring Return									
1/2"	CH050SR	138	87	48	50	115	185	75	3.5
3/4"	CH063SR	156	103	53	50	120	206	86	4.9
1"	CH063SR	156	103	59	50	125	212	86	5.8
1 1/4"	CH063SR	156	103	71	50	130	224	86	7.4
1 1/2"	CH075SR	210	120	76	50	140	246	94	10.5
2"	CH075SR	210	120	85	50	150	255	94	13.2
2 1/2"	CH100SR	281	145	94	70	170	309	120	21.1
3"	CH115SR	310	172	103	70	180	343	134	28.7
4"	CH145SR	390	205	132	70	190	407	139	45.0



Valve Data Sheet



Doc: BVSS-M94D/01

Nov 2007

Full bore direct mount PN16 flanged stainless steel ball valve



Specifications:

Construction	2 Pce full bore direct mount ball valve
Size Range (Full)	1/2" to 6" Flanged PN16
Pressure Rating	PN16
Valve Body Material	ASTM A351 CF8M
Trim Material	ASTM A351 CF8M
Seat Material	PTFE
Seal Material (Options)	PTFE
Inspection & Test	API 598 BS6755 Pt 1
Standards	ANSI B16.34, ANSI 16.25, ANSI B1.20, API 6D ANSI B16.10, ISO5211 DIN 259, DIN 2999, DIN3337.
Certification	EN 10204 3.1b on request
Temperature Range	-20 to +190C

Approvals:

Approved ?



PED/97/23/EC



ATEX 94/9/EC
II 2 GD



API 607 4th Ed'n /
BS6755 Pt 2



TA-Luft



DIMENSIONS (mm)/ PN16 (1/2" to 4")

SIZE	A	F	E	L(F4)	L(F1)	K	M	G	J	PN16 FLANGE DIMENSIONS								
										D	C	H	N	t	g	B	O	f
1/2"	15	65	140	115	130	6.5	42	M5	10	95	65	14	4	14	45	13.9	10.7	2
3/4"	20	75	140	120	150	6.5	42	M5	10	105	75	14	4	16	58	14.2	10.9	2
1"	25	85	170	125	160	9.7	50	M6	14	115	85	14	4	16	68	21.6	16.8	2
1-1/4"	32	90	170	130	180	9.7	50	M6	14	140	100	18	4	16	78	21.6	16.8	2
1-1/2"	38	105	230	140	200	9.7	70	M8	18	150	110	18	4	16	88	24.9	18.0	3
2"	50	115	230	150	230	9.7	70	M8	18	165	125	18	4	18	102	23.9	19.6	3
2-1/2"	65	132	300	170	290	12	102	M10	20	185	145	18	4	18	122	22.9	16.3	3
3"	80	146	340	180	310	12	102	M10	20	200	160	18	8	20	138	21.9	16.3	3
4"	100	165	420	190	350	15	102	M10	24	220	180	18	8	20	158	29.7	24.4	3

