



Model 4911/4912



Doc: CH-4911/02

Nov 2007

Air operated PN16 3 way cast iron ball valve

Full bore 3 way cast iron steel ball valve, ends flanged PN16, fitted via stainless steel mounting kit with CH-air 'A' type pneumatic actuator. Supplied assembled and dry bench function tested. A minimum of 80 psi (5.5 bar) air supply pressure to the actuator is required.

4911 With double acting actuator

4912 With spring return actuator

Size range 2" to 6"

Applications:

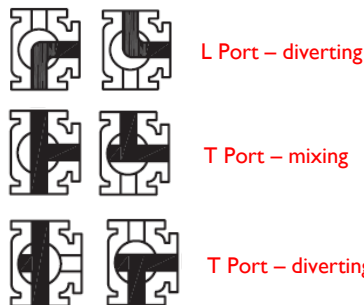
Water, oil, air and most solvents and alkalis, subject to compatibility with wetted parts in contact with media. Actuators sized on a maximum differential pressure of 10 bar wet service, if the intended duty is above this differential, or dry (air or gas) call to check actuator sizing as a larger output actuator may be required.

Maximum working temperature of valve & actuator assembly is +130C. If the intended duty is at a higher temperature than this, contact us for options.

Valve Specifications:

Body	CCast iron
Ball	Cast Iron
Seats	PTFE
Pressure rating	16 bar
Valve temp limits	-20 to +150°C
Actuator temp limits	-20 to + 70°C

3 Way ball valves –flow patterns:



Accessories:

Solenoid control:

This provides electrical control of the valve. The air is constantly supplied to the solenoid which in turn controls the air to and from the actuator. The solenoid direct mounts to the actuator using the actuator's Namur connection.

Position Confirmation:

Remote end of travel confirmation can be provided by adding a top mounted limit switch box. A variety of switch options and housings are available. See our LSB range for details.

Position control:

The standard on/ off function can be converted to modulating function, using either a 3-15psi or 4-20mA control signal, by adding a pneumatic or electro-pneumatic positioner. See our YT range for details.

Quick guide to the CH-air A Type actuator standard features :

Robust rack and pinion construction

High accuracy machining of components

ATEX Ex II 2 GD approved for use in hazardous areas

CE Approved

Guaranteed for 1,000,000 cycles

Balanced air & spring strokes in spring return version

Safe to dismantle for routine maintenance

Compliant with all actuator standards

Accessories are easy to mount

Hard anodised aluminium body

ENP coated option (Extra cost)

Teflon® coated option (Extra cost)

Stainless steel version (Extra cost)





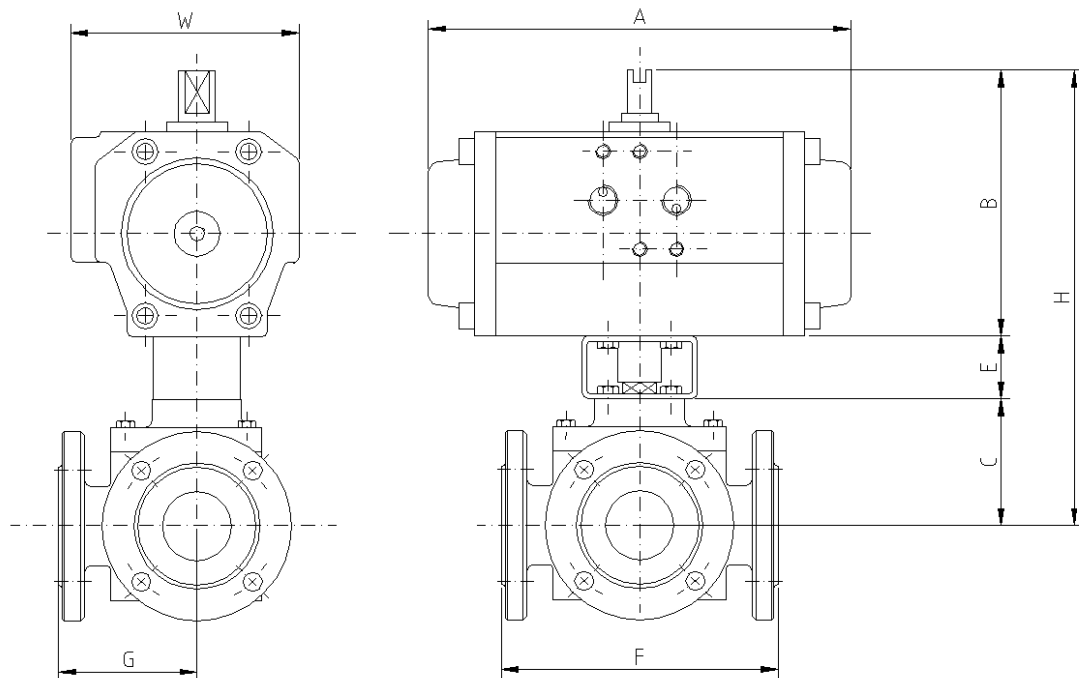
Model 4911A/4912A



Doc: CH-4911/02

Nov 2007

Air operated PNI6 3 way cast iron ball valve - Dimensions (to nearest mm)



Double Acting

	Model	A	B	C	E	F	G	H	W	Kilos
2"	CH085	228	130	84	50	220	11	264	104	22.5
2 1/2"	CH100	281	145	85	70	250	125	300	120	32.1
3"	CH100	281	145	125	70	260	130	340	120	35.1
4"	CH125	362	185	125	70	340	170	380	141	60.0
6"	CH160	462	246	165	70	435	218	481	176	127.0

Spring Return

2"	CH100SR	281	145	84	70	220	11	299	120	23.0
2 1/2"	CH115SR	310	172	85	70	250	125	327	134	36.4
3"	CH125SR	362	185	125	70	260	130	380	141	43.8
4"	CH160SR	462	246	125	70	340	170	441	176	66.8
6"	CH240SR	590	348	165	70	435	218	583	300	180.0



Valve Data Sheet



Doc: CIBV-3W/01

Nov 2007

Full bore PN16 3 way flanged cast iron ball valve



3 Way ball valves – flow patterns:



L Port – diverting



T Port – mixing



T Port – diverting

Specifications:

Construction	Top entry full bore 3 way cast iron ball valve
Size Range (Full)	2" to 6" Flanged PN16
Pressure Rating	PN16
Valve Body Material	Cast iron
Trim Material	CF8
Seat Material	PTFE
Seal Material (Options)	PTFE
Inspection & Test	Manufacturer's own
Standards	Manufacturer's own
Certification	None
Temperature Range	-20 to +190C

Approvals:

Approved ?



PED/97/23/EC



ATEX 94/9/EC
II 2 GD



API 607 4th Ed'n /
BS6755 Pt 2



TA-Luft

