



Valve Data Sheet



Doc: BV-PVC-C73/02

Nov 2007



Full bore uPVC ball valve



With mounting kit for actuator

Specifications:

GENERAL	VALVE TYPE	FULL BORE 1/4 TURN BALL VALVE	
	VALVE MODEL	BV-A73	
	OPERATOR	HAND OPERATED WITH LEVER, OR BY ACTUATOR	
	DESIGN STANDARDS	MANUFACTURERS OWN	
	FACE TO FACE DIMS	MANUFACTURERS OWN	
	TESTING STANDARDS	MANUFACTURERS OWN	
	CERTIFICATION	CERTIFICATE OF CONFORMITY ONLY	
	ACTUATOR MOUNTING	MOUNTS WITH MOUNTING KIT	
	SIZE RANGE	3/8" UP TO 4"	
	PRESSURE RATING	PN16 UP TO 2", ABOVE 2" PN10	
TEMPERATURE LIMITS	WORKING PRESSURE BASED AT 20C		
MATERIALS	BODY	PVC-U	
	BALL	PVC-U	
	STEM(BLOW-OUT PROOF)	PVC-U	
	SEATS	PTFE	
	SEALS	EPDM OR VITON	
	END CONNECTIONS	SOLVENT SOCKET OR BSPP	
FEATURES	ANTI-STATIC DEVICE	NO	
	FIRE SAFE	NO	
	PRIMARY STEM SEAL	RUBBER O RING	
	SECONDARY STEM SEAL	RUBBER O RING	
	STEM SEAL ADJUSTMENT	NO	
	IN-LINE MAINTAINABLE	NO	
	OTHER	WRAS APPROVED	



Valve Data Sheet



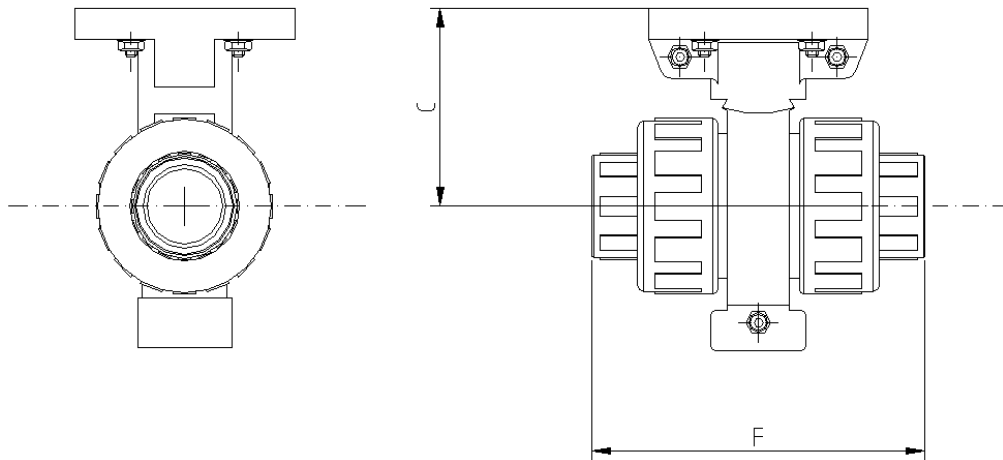
Doc: BV-PVC-C73/02

Nov 2007

Dimensions:



With mounting kit for actuator



	1/2"	3/4"	1"	1 1/4"	1 1/2"	2"	2 1/2"	3"	4"
C	87	87	87	87	87	87	120	120	120
F	85	108	124	142	167	198	232	269	269

Dimensions in mm. Manufacturer reserves the right to amend without notice.